

## How to use gain access to your work computer via LogMeIn

Step 1:

<https://user.itsupport247.net/>

Step 2:

Enter your username and password provided by StarPoint Advantage

Note – Do not check the “Remote Into Favorite Desktop”


### Welcome



**User Name**

**Password**

Remote Into Favorite Desktop

Login



Options	Resource Name	Friendly Name
 	SP-WS05	SP-WS05

Total Resources Count: 1


click the first icon to remotely access your work computer

LogMeIn

Now connected to  
**SP-WS05**

Please enter your Windows username and password.

User name

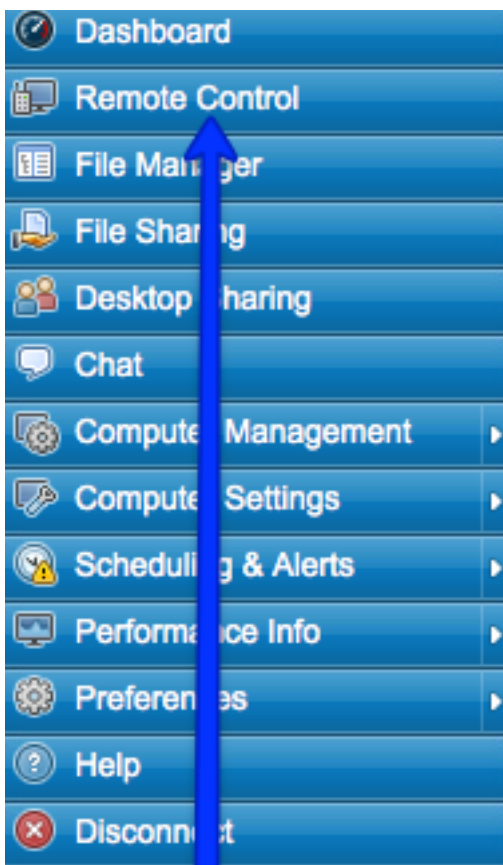
Password  

The host computer keyboard and mouse are currently active.

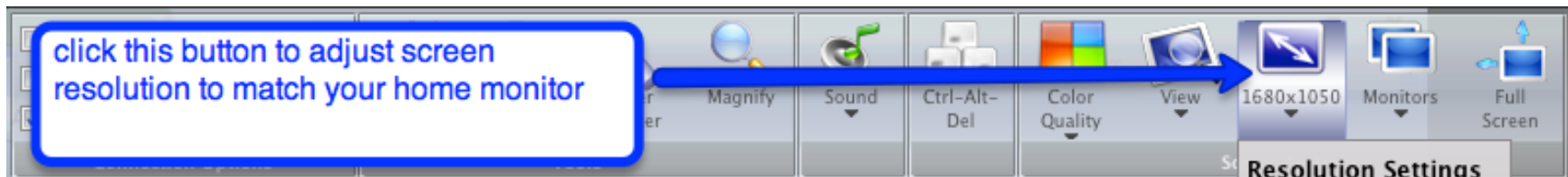
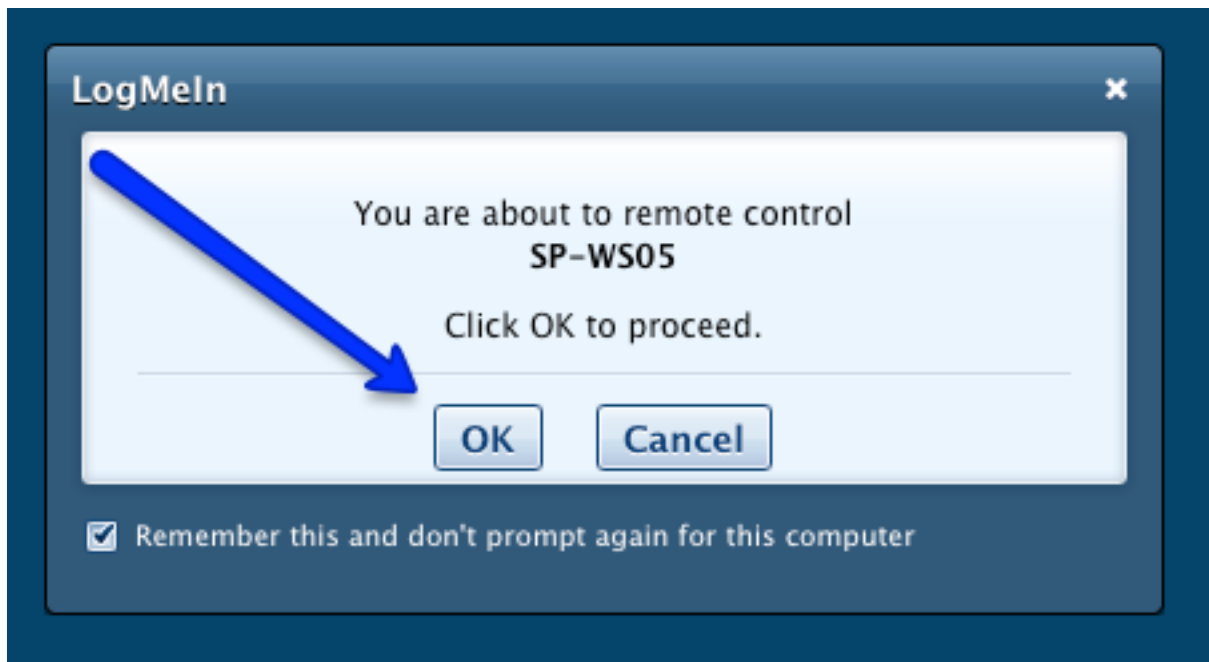
Initiate Chat with User after login.

enter your password for your work computer

enter your password for your work computer



click on the  
Remote  
Control button



## Resolution Settings

	Match Resolution
ch 20	640 x 480
We	720 x 480
29	720 x 576
7	800 x 600
14	1024 x 768
21	1152 x 864
28	1280 x 720
	1280 x 768
oLLP/	1280 x 800
00 AM	1280 x 960
	1280 x 1024
oLLP/	1360 x 768
030 AM	1366 x 768

click Match  
Resolution  
button

click the X to log off



click disconnect to exit  
logmein

- Desktop Sharing
- Chat
- Computer Management ▶
- Computer Settings ▶
- Scheduling & Alerts ▶
- Performance Info ▶
- Preferences ▶
- Help
- Disconnect